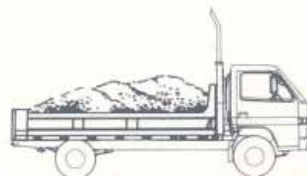
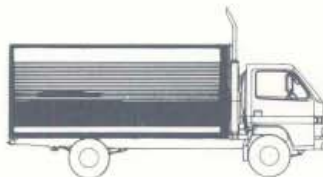


# 400

## 4x2 CAB/CHASSIS

MODEL:	GVM:	ORDERING CODE:
NPR 400 Medium	7000kg	8CS02-22H
NPR 400 Long	7000kg	8CT02-221
NPR 400 Turbo	7000kg	8CT02-231



## MODEL RANGE SUMMARY

NPR 400  
MEDIUM  
  
NPR 400  
LONG  
  
NPR 400  
TURBO

ENGINE		TRANSMISSION		AXLE FRONT (kg)	AXLE REAR (kg)		WHEELBASE (mm)		*BODY LENGTH (mm)	BRAKES
4BD1 3.9l	4BD1-T 3.9l	ISUZU MSA5G 5 speed	ISUZU MSA5S Dual Range 5 speed	2700 Cap.	5000 Cap.	RATIO: 1	3365	3815		Dual Hydraulic with vacuum servo
●		●		●	●	5.857	●		4570	●
●		●		●	●	5.857		●	5330	●
	●		●	●	●	6.142		●	5330	●

## RATINGS

NPR 400  
MEDIUM  
  
NPR 400  
LONG  
  
NPR 400  
TURBO

GVM (kg)	GCM (kg)	TYRES	ESTIMATED KERB MASS (kg) *			MAX GEARED SPEED (km/h)
			Front	Rear	Total	
7000	9000	7.50R 16LT - 12 ply	1440	800	2240	101
7000	9000		1450	820	2270	101
7000	9000		1500	830	2330	136

• Chassis and cab with oil, water and fuel tank containing 10 litres of fuel.

\* Subject to weight distribution.

Body Builder's note: New lighting regulations have now been enforced, please refer to the relevant ADRs for full body fitment regulations.

# ISUZU



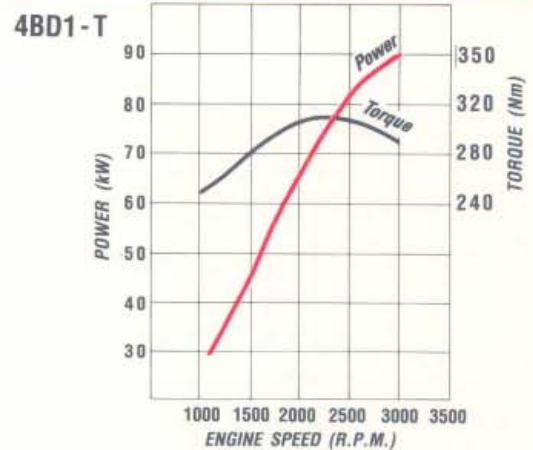
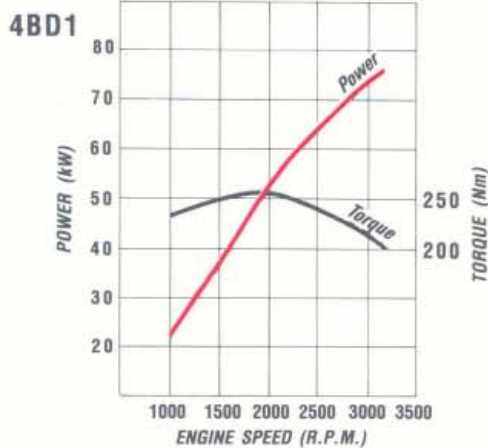
# MECHANICAL Cab/Chassis Components

		NPR 400 MED.	NPR 400 LONG	NPR 400 TURBO
AXLE	<b>FRONT</b> ■ Type: Reverse Elliot I-beam ■ Capacity: 2700kg	●	●	●
	<b>REAR</b> ■ Type: Banjo, fully floating ■ Capacity: 5000kg ■ Final gear: 292mm diameter ■ Ratio: 5.857:1 ■ Ratio: 6.142:1	●	●	●
BRAKE	<b>SERVICE</b> ■ Type: Hydraulic, dual circuit, front two leading and rear dual leading ■ Total lining area: 1840cm <sup>2</sup>	●	●	●
	<b>PARKING</b> Type: Mechanical, at rear of transmission	●	●	●
	<b>AUXILIARY</b> Exhaust brake	●	●	●
CAB	<b>EXTERIOR</b> ■ All steel tilt cab ■ Manual tilt - 45° ■ Laminated windshield 2 speed wiper/washer with intermittent mode ■ West coast type exterior mirrors with clearance lamps ■ Dual square sealed beam headlamps ■ Energy absorbing front bumper ■ Large aluminium entry steps to each side ■ Tool kit with 5000kg capacity jack	●	●	●
	<b>INTERIOR</b> ■ Seats: Driver - adjustable and reclining bucket seat with lumbar support ■ 2 seater passenger seat ■ Retractable lap-sash seat belts on outboard seats ■ Seat material: Cloth ■ Front side quarter vent windows ■ AM/FM clock radio ■ Heater/Demister with 3 speed fan ■ Full length glove compartment ■ Centre console box ■ Windshield washertank located in passenger door ■ Driver and passenger sunvisors ■ Padded roof lining ■ Optional air conditioning	●	●	●
	<b>INSTRUMENTATION</b> ■ Speedometer with odometer and tripmeter ■ Tachometer ■ Gauges: Engine coolant temperature and fuel level	●	●	●
	■ Indicator Lamps: Economy ratio engaged Turning indicators, headlamp high beam, exhaust brake on and park brake engaged ■ Warning Lamps: Oil pressure, brake failure, low battery charge, fuel level, coolant level and glow plug ■ Switches: Left side combination switch for exhaust brake, wipers and washer. Right combination switch for headlamps and turn signals, key operation for engine start and stop. Fast engine warm-up	●	●	●
CLUTCH	■ Type: Hydraulic control. Dry single plate with diaphragm spring ■ Size: 300mm	●	●	●
ELECTRICAL SYSTEM	■ Batteries: 2 x 12V 50 A/H ■ Alternator: 24V - 20A ■ Starter: 24V - 3.5 kW	●	●	●



		NPR 400 MED.	NPR 400 LONG	NPR 400 TURBO	
<b>ENGINE</b>	<b>ISUZU 4BD1</b> ■ Type: 4 cylinder OHV diesel ■ Bore x Stroke (mm) 102 x 118 ■ Displacement 3856 (cc) ■ Compression ratios (:1) 17.0 ■ Output-Power (kW) 76 @ 3200 rpm (DIN Nett) ■ Torque (Nm) 255 @ 1900 rpm (DIN Nett)	●	●		
	<b>ISUZU 4BD1T</b> ■ Type: 4 Cylinder turbo charged OHV diesel ■ Bore x Stroke (mm) 102 x 118 ■ Displacement 3856 (cc) ■ Compression ratios (:1) 17.0 ■ Output-Power (kW) 90 @ 3000 rpm (DIN Nett) ■ Torque (Nm) 314 @ 2200 rpm (DIN Nett)			●	
<b>EXHAUST</b>	<b>LUBRICATION</b> ■ Pressure feed with full flow paper element filter and partial flow sub filter	●	●	●	
	■ Capacity: 8.0 litres, including filter	●	●		
	■ Capacity: 8.8 litres, including filter			●	
	<b>COOLING</b> ■ 8 blade 400mm dia. plastic fan with viscous drive fan clutch ■ Radiator size: 547h x 471w x 54t	●	●	●	
	<b>AIR CLEANER</b> ■ Paper element (cartridge type) mounted high on frame side ■ High level intake	●	●	●	
	Vertical stack behind cab	●	●	●	
<b>FUEL SYSTEM</b>	■ Injection pump: In line plunger, Bosch 'A' type with mechanical all speed governor ■ Fuel/water sedimentor with warning lamp ■ Fuel tank capacity: 90 litres	●	●	●	
	<b>FRAME</b>	■ Type: Ladder type channel section ■ Side member dimensions: 173 x 65 x 6mm	●	●	●
		<b>STEERING</b>	■ Type: Power assisted recirculating ball ■ Gear ratio: 22.6:1	●	●
<b>SUSPENSION</b>	<b>FRONT</b> ■ Type: Semi-elliptical alloy steel leaf springs. ■ Capacity: 4900kg ■ Shock absorbers: Hydraulic, double acting, telescopic ■ Size: l x w(mm): 1140 x 70 x 7 x 7 leaves	●	●	●	
	<b>REAR</b> ■ Type: Semi-elliptical, alloy steel leaf springs ■ Capacity: 9600kg ■ Shock absorbers: Hydraulic, double acting, telescopic ■ Size: l x w(mm) Main: 1250 x 70 x 6 leaves Auxiliary: 970 x 70 x 5 leaves	●	●	●	
<b>TRANSMISSION</b>	■ Type : Isuzu 5 speed overdrive (MSA5G) with short remote gear shift lever ■ Gear Ratios 1:      1st    2nd    3rd    4th    5th    Rev 5.788   2.998   1.594   1.000   0.776   5.798	●	●		
	■ Type: Isuzu 5 speed overdrive (MSA5S) with Dual Range Shift ■ Gear Ratios 1:      1st    2nd    3rd    4th    5th    Rev 4.987   2.870   1.684   1.000   0.728   4.777			●	
	■ Supershift gear ratio: 1 Economy 0.762 Power 1.000				
	<b>TYRES</b>	Tyre size: 7.50R - 16LT - 12 ply (Goodyear G22)	STD F/R	STD F/R	STD F/R
<b>WHEELS</b>	Wheel type and size: 6.00 GS x 16 - 6 Stud	●	●	●	

# 4BD1 & 4BD1-T ENGINE PERFORMANCE



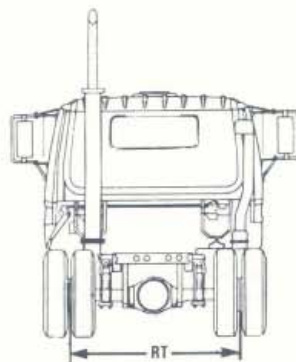
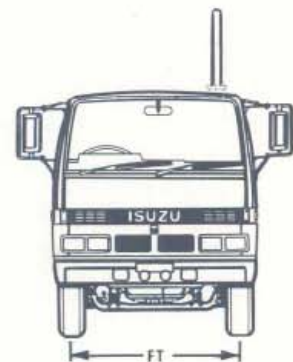
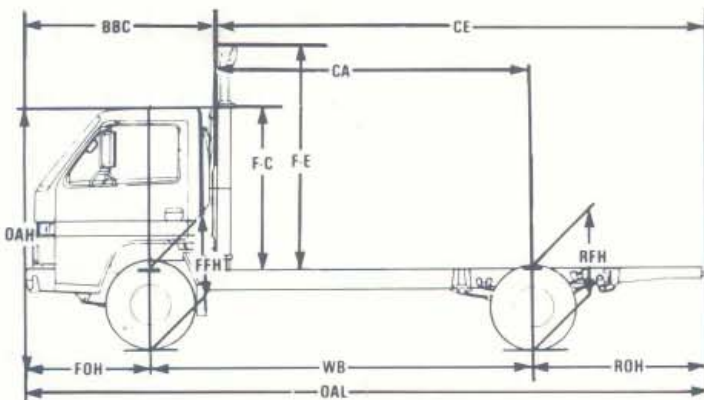
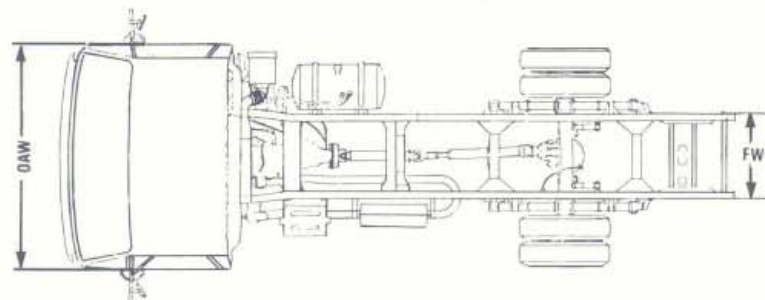
## ISUZU 4BD1

Type: 4 cylinder OHV diesel ■ Bore x Stroke (mm) 102 x 118  
 ■ Displacement 3856 (cc) ■ Compression ratio (:1) 17.0 ■ Output-Power (kW) 76 @ 3200 rpm (DIN Nett) ■ Torque (Nm) 255 @ 1900 rpm (DIN Nett)

## ISUZU 4BD1-T

Type: 4 cylinder turbo charged OHV diesel ■ Bore x Stroke (mm) 102 x 118  
 ■ Displacement 3856 (cc) ■ Compression ratio (:1) 17.0 ■ Output-Power (kW) 90 @ 3000 rpm (DIN Nett) ■ Torque (Nm) 314 @ 2200 rpm (DIN Nett)

# DIMENSIONS



	NPR 400 MED.	NPR 400 LONG	NPR 400 TURBO
OAL (Overall length)	5955	6610	6610
WB (Wheelbase)	3365	3815	3815
CA (Cab to axle)	2845*	3295*	3295*
CE (Cab to end of frame)	4350*	5005*	5005*
ROH (Rear overhang)	1505	1710	1710
FOH (Front overhang)	1085	1085	1085
BBC (Bumper to back of cab)	1605	1605	1605
OAW (Overall width)	1995	1995	1995
FW (Frame width)	750	750	750
FT (Front track)	1665	1665	1665
RT (Rear track)	1525	1525	1525
FFH (Front frame height) *	675	675	675
RFH (Rear frame height) *	755	755	755
FC (Frame to top of cab)	1435	1435	1435
FE (Frame to top of exhaust)	2480	2480	2480
OAH (Overall height to top of air intake duct)	2145	2145	2145
TURNING CIRCLE (m) Kerb to kerb	13.0	14.4	14.4

\* At kerb mass  
 \*CA and CE dimensions are effectively reduced by 200mm with fitment of vertical exhaust pipe.

ISUZU-GENERAL MOTORS AUSTRALIA LTD. A.C.N. 006 962 572 12/20 WARRANTY.

Every Isuzu truck is covered by the I-GM New Vehicle Warranty which covers your vehicle for the first 12 months or 20,000 kilometres.

PLEASE NOTE: As the policy of Isuzu-General Motors Australia Ltd. is one of continual product improvement, all specifications and equipment are subject to change without notice. Bodies illustrated are not standard.

No I-GM Dealer or other person is authorised or permitted to give or make any statement, assertion or undertaking in relation to the quality performance characteristics descriptions or fitness for any purpose of any I-GM product or in connection with the supply of any I-GM product which is at variance with any written statement assertion or undertaking on any of these subjects given or made by Isuzu-General Motors Australia Ltd. in its published sales literature, and the company accepts no liability for any such unauthorised action. Isuzu-General Motors Australia Ltd. have franchised dealers in many parts of Australia for the sale of service parts and the provision of service to owners of I-GM products. Every endeavour is made to ensure that such dealers carry adequate stocks of service parts, and are equipped to provide satisfactory service, but makes no promise, other than that contained in the New Vehicle Warranty given by Isuzu-General Motors Australia Ltd. that such parts or service facilities will be available, or available at any specific location or any particular time.