



Isuzu SCR 420B



Chassis/Cab.

GVM 10,500 kg with 8.25 x 20-12 ply tyres

Engine:

Model: Isuzu 6BD1 Diesel Engine.
 Type: Four cycle, water cooled, overhead valve, in-line, direct injection.
 No. of cylinders: 6.
 Bore and stroke: 102 mm x 118 mm (4.02 ins. x 4.65 ins.).
 Displacement 5785 cm³ (353 CID).
 Max. net horsepower: 100 kW (134 bhp) @ 3,200 rpm DIN.
 Max net torque: 351 Nm (258 lbs./ft.) @ 1850 rpm DIN.
 Compression ratio: 17.5:1.
 RAC rating: 38.7

Air Cleaner:

Paper element with cyclone device—8" Donaldson.

Axle, Front:

Capacity: 3400 kg.
 Type: Reverse Elliott I-beam.

Axle, Rear:

Capacity: 7400 kg.
 Type: Banjo, fully floating, single reduction, hypoid gear.
 Final gear ratio (to 1) 5.875.

Brakes, Service:

Type: Hydraulic with air assist, front two leading, rear dual two leading.
 Exhaust brake.
 Total lining area: 341 sq. metres (528.6 sq. ins.)

Brake, Parking:

Type: Mechanical internal expanding at rear of transmission.

Clutch:

Type: Dry single plate with cushioning springs. Hydraulically operated.
 Size: Outside diameter 325 mm (12.6 ins.).
 Total frictional area: 0.966 sq. metres (149.7 sq. ins.).

Cooling System:

Radiator: Tube and corrugated fin, pressured type.
 Frontal area, radiator: 0.262 sq. metres (406.1 sq. ins.).
 Core thickness: 70 mm (2.76 ins.).

Drive Line:

Type: Tubular shaft, needle bearing universal joint.

Electric System:

Battery: 2 x 12 volt.
 Capacity: 60 amp./hr. each battery. Negative earth.
 Alternator: 24 volt/5 amp.
 Starter: 24 volt/4.5 kW.

Frame:

Type: Ladder type channel section.
 Frame width: 800 mm (31.5 ins.).
 Side member dimensions: Depth x Width x Thickness—
 225 mm (8.865 ins.) x 70 mm (2.76 ins.) x 6 mm (.2364 ins.).

Springs:

Type: Semi-elliptical alloy steel leaf springs.
 Size: Length x Width—No. of leaves.
 Front: 1200 mm (47.28 ins.) x 70 mm (2.76 ins.)—8.
 Rear: 1300 mm (51.22 ins.) x 70 mm (2.76 ins.)—8.
 Rear auxiliary: 850 mm (33.49 ins.) x 70 mm (2.76 ins.)—7.
 Shock absorbers: Hydraulic double acting telescopic shock absorbers at front.

Steering:

Type: Recirculating ball. Power assisted.
 Gear ratio: 21.6:1.

Engine Lubrication:

Pressure feed with full-flow paper element, oil cooler.
 Capacity: 14.5 litres (25.5 Imp. pts). Including filter.

Fuel System:

Injection pump: Reformed Bosch in-line with mechanical governor.
 Fuel tank capacity: 90 litres (19.5 Imp. gals.).

Transmission:—Isuzu MBD5C

5-speed, direct drive, synchromesh on 2nd, 3rd, 4th, 5th gears, floor mounted remote control.

Ratios (to 1):

1st	2nd	3rd	4th	5th	Reverse
6.890	3.627	2.239	1.452	1.000	5.836

Wheels and Tyres:

Dual rear wheels.
 Wheels and rims: 6.50 T x 20, 8 stud disc wheels. 145 mm offset.
 Tyres: 8.25 x 20—12 ply.

Standard Equipment:

All steel cab (tilt type). Adjustable driver seat. Two-speed windshield wiper. Windshield washer. Hazard warning flasher. Dual electric horn. Hydraulic jack and wheel wrench. Floor mat. Speedometer and odometer. Meter for fuel, water temperature. Warning lamp for charging, oil pressure, air pressure gauge. Indicator lamp for turn signal, main beam, parking brake. Starter heater control. Laminated windshield glass. Spare tyre carrier. Tachometer. Heater and demister. Radio. General hand tools.

GMH 12/20 Warranty:

Every Isuzu is covered by the GMH Warranty which covers your vehicle for the first 12 months or 20,000 kilometres.

Isuzu SCR 420B



DIMENSIONS/CHASSIS WEIGHTS

Lengths:

		mm
Wheelbase	WB	4,200
Front overhang	FOH	1,210
Rear overhang	ROH	1,750
Bumper-back of cab	BBC	2,020
Cab-axle	CA	3,390*
Cab to end of frame	CE	5,140*
Overall length	OAL	7,160
Top of frame to ground	FH	940

*CE and CA dimensions are effectively reduced by 300 mm with fitment of vertical exhaust pipe and protector.

Widths:

Frame width	FW	800
Front track	FT	1,905
Inside rear track	IRT	1,340
Outside rear track	ORT	1,920
Overall width	OAW	2,170

Heights:

Overall height (top of cab)	OAH	2,392
Rear axle clearance	B	270

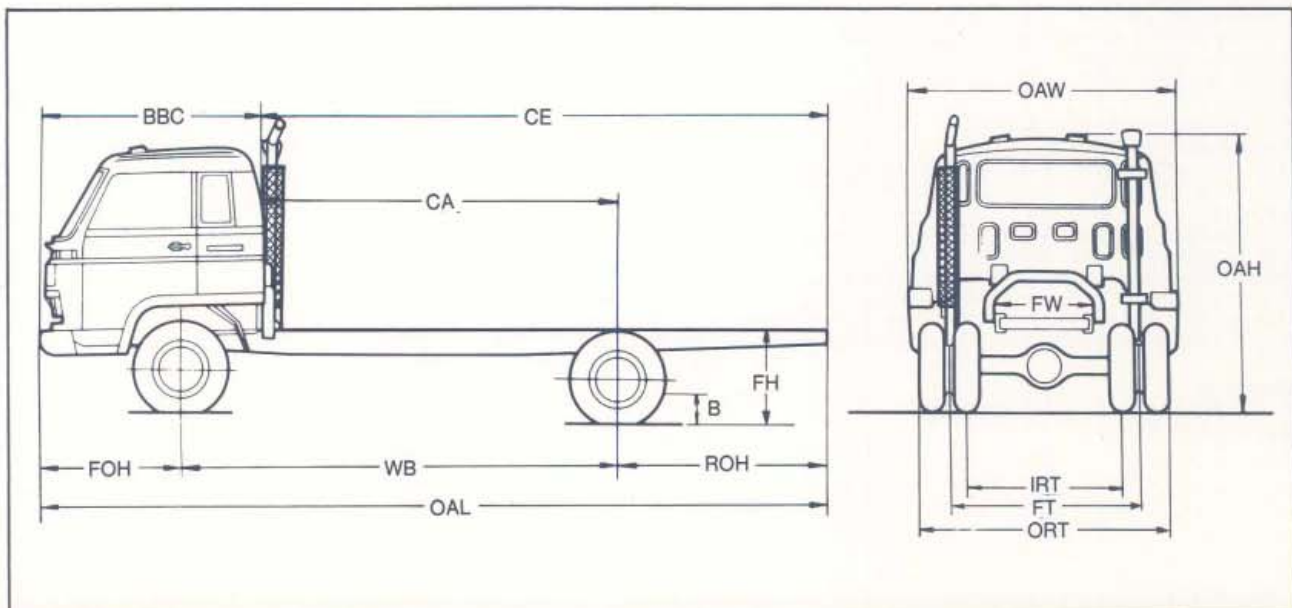
Turning Circle:

	metres
Kerb to kerb	16.4
Wall to wall	18.0

PLEASE NOTE: As the policy of General Motors-Holden's is one of continual product improvement, all specifications and equipment are subject to change without notice. Bodies illustrated are not standard.

No GMH dealer or other person is authorised or permitted to give or make any statement assertion or undertaking in relation to the quality performance characteristics descriptions or fitness for any purpose of any GMH product or in connection with the supply of any GMH product, which is at variance with any written statement assertion or undertaking on any of these subjects given or made by General Motors-Holden's Limited or General Motors-Holden's Sales Pty. Ltd. in its published sales literature, and neither company accepts any liability for any such unauthorised action.

General Motors-Holden's Limited and General Motors-Holden's Sales Pty. Ltd. have franchised dealers in many parts of Australia for the sale of service parts and the provision of service to owners of GMH's products. Every endeavour is made to ensure that such dealers carry adequate stocks of service parts, and are equipped to provide satisfactory service, but neither General Motors-Holden's Ltd. nor General Motors-Holden's Sales Pty. Ltd. makes any promise, other than that contained in the New Vehicle Warranty given by General Motors-Holden's Sales Pty. Ltd., that such parts or service facilities will be available, or available at any specific location or any particular time.



ESTIMATED KERB WEIGHTS, CHASSIS AND CAB: (With oil, water and full fuel tank)	GCM	GVM	Tyres	Front	Rear	Total
	15000	10500	8.25 x 20-12 Ply	1810	990	2800